



GAT MONTHLY MEMBERSHIP PROGRESS REPORT

Results as of: 4/30/2023

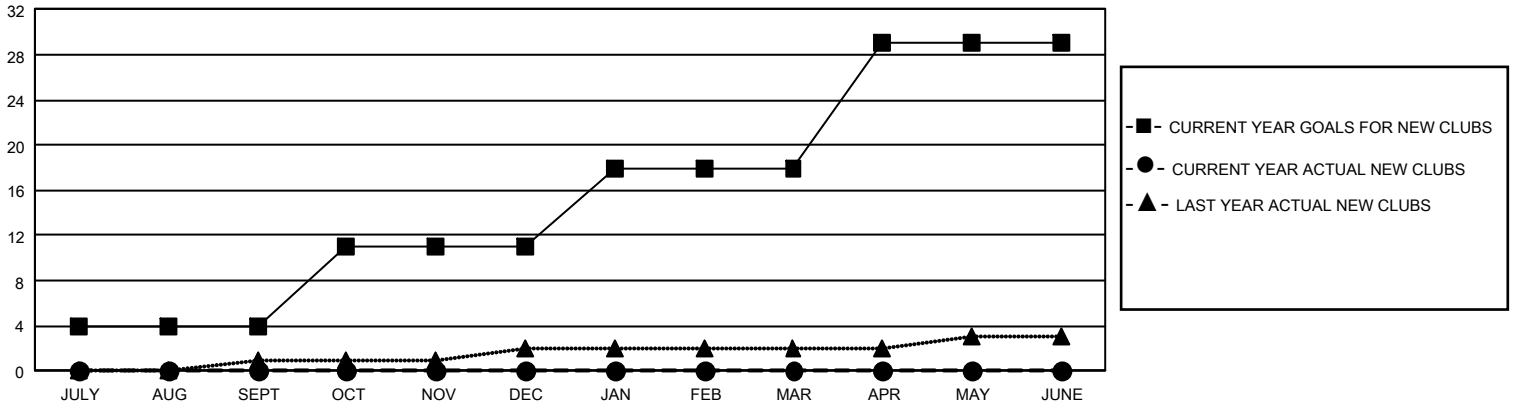
GMT Constitutional Area 1, Group E

REPORT DOES NOT INCLUDE CLUBS IN UNDISTRICTED AREAS.

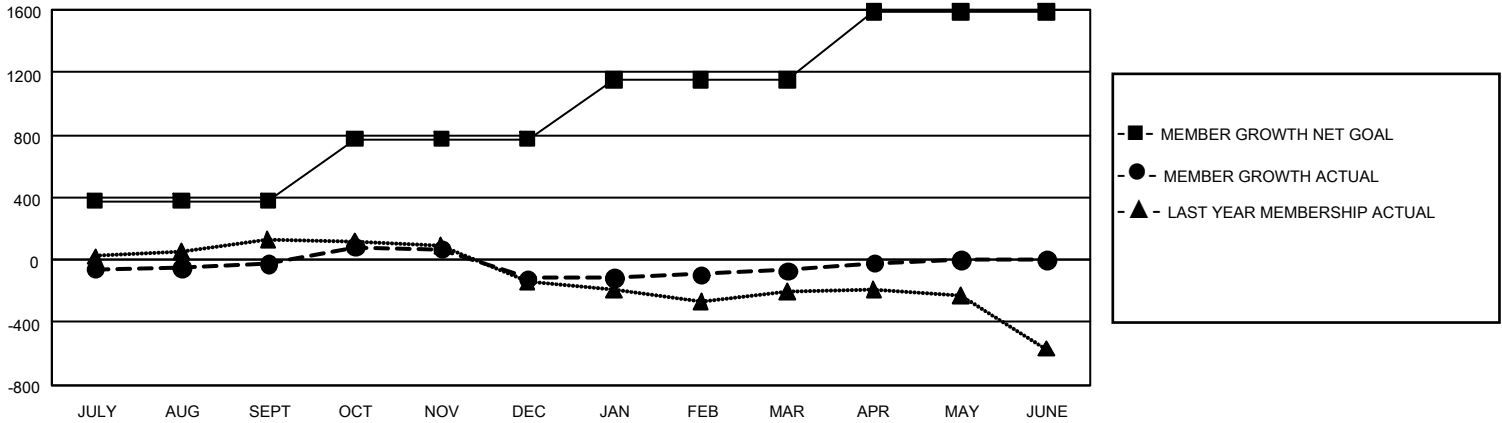
Clubs			
RESULTS FOR 2022-2023			
QUARTER	NEW CLUB GOAL	NEW CLUBS	DROPPED CLUBS
JULY/AUG/SEPT	12	0	5
OCT/NOV/DEC	21	0	2
JAN/FEB/MAR	21	0	1
APR/MAY/JUNE	33	0	1

Members			
RESULTS FOR 2022-2023			
QUARTER	MEMBER GROWTH NET GOAL	MEMBER GROWTH ACTUAL	DROPPED MEMBERS ACTUAL (including transfers)
JULY/AUG/SEPT	378	777	711
OCT/NOV/DEC	397	738	774
JAN/FEB/MAR	375	748	615
APR/MAY/JUNE	435	228	172

GOALS AND ACTUAL NEW CLUBS CUMULATIVE



GOALS AND ACTUAL MEMBERS CUMULATIVE



DROPPED CLUBS: 9	606 CLUBS OF 1,003 ADDED 1 OR MORE NEW MEMBERS	<u>GENDER DISTRIBUTION</u>	
		MALE 21,687 (71.10%) FEMALE 8,807 (28.88%) NON BINARY 1 (0.00%) PREFER NOT TO ANSWER 5 (0.02%)	
<u>DROPPED MEMBERS</u>		CLICK HERE FOR CUMULATIVE MEMBERSHIP DATA	TOTAL FAMILY UNIT MEMBERS 5,522
DECEASED 388 CLUB CANCELLED 45 OTHER 1,839 TOTAL 2,272	FAMILY MEMBERS PAYING HALF DUES 2,817		